



Field Studies
Council



Our Impact:

How the charity makes a difference



Contents

1	In numbers
5	A word from our CEO
3	Introduction
5	The big impact
6	A new generation
7	Young Darwin Scholarship
8	Youth panel
9	Generation Green 2
11	Leisure
13	Biodiversity
15	Influencing and advocacy
17	Sustainability
19	Publications
20	Fundraising



Field Studies Council in numbers

22,903
Total subsidised learners

We are committed to engaging the **widest range of people** with the outdoors. We also access funding through a number of sources, to help break down financial barriers to outdoor learning.

Funded projects:

4,752 subsidised learners including:

- 1,993** Generation Green 2
- 435** Adventures Away from Home
- 168** Dedham Vale Rivers Day
- 1,484** Greenwich Park Revealed

Foundation:

17,561 subsidised learners including:

- 16,560** activities, events, publications
- 896** Grants for Schools places
- 75** Young Darwin Scholarships

Biodiversity:

6,993 adult learners including
590 subsidies for young people

Leisure courses:

17,380 leisure participants

High quality outdoor learning

Through our **courses and materials** we provide opportunities for people to access **high quality outdoor learning**

100,345 total learners from schools, colleges and universities



Residential learners: 38,824

Day: 59,883

Outreach: 608

Online: 1,030

Wild ID publications:

11 new guides for sale

134,000+ guides sold



We promote **sustainable approaches** in all aspects of our work

Advocate sustainably

[9]

consultations or inquiry responses

[30]

carbon literate staff

[80%]

of the meals we serve are Co2e green

[5,250]

litres of used cooking oil into biodiesel!





A word from our CEO

Field Studies Council exists to make a positive, lasting impact on people and the planet.

This impact report reflects the dedicated work by this charity, our supporters and our partners as together we provide opportunities for all ages and all abilities to connect to nature.

We know that exploring, experiencing and learning in and about nature is more than just memorable: it can be truly life-changing. This is particularly true for those that—without our work and our supporters—would otherwise miss out.

I hope that you enjoy finding out about how we are truly making a difference.

Mark Castle OBE, FRSA, Chief Executive

From January to December 2024, over **100,000 learners** from schools, colleges and universities joined us for outdoor learning at our day and residential field centres.

In 2024:

Over **6,993 adults** trained in applied biodiversity skills online and in person, at our centres and at 28 partner locations.

Over **134,000 wildlife guides** used by volunteer recorders, families and professionals.

Explore, discover and learn

We welcome people of all ages and abilities to stay and study at our network of centres across England, Wales and Scotland. They tell us there's no substitute for first-hand experiences in nature. Our charity gives learners a special opportunity to see and explore natural landscapes for themselves. We see time and time again how hands-on practical activities in the outdoors bring a subject to life and create vivid memories which last. There is nothing like seeing it for yourself. Getting more people outside, providing high quality outdoor learning and advocating sustainability.





The **big impact** of outdoor environmental education with **Field Studies Council**

93% said that their experience gave them a better understanding of the subject they came to study

For our younger visitors, residential can be a first time away from home. Being away from the usual classroom environment can help those learners who struggle indoors re-engage with the learning process outdoors.

Sharing new experiences, space, mealtimes and overcoming challenges together on courses build personal and social skills.





We need a new generation of naturalists, but access to nature is not equitable

The more we experience and learn about our environment the more we will care for it, so we strive to educate people of all ages to understand and appreciate the wonder of the natural world. This has never been more important as the world faces the challenges of climate change and biodiversity loss.

The Field Studies Council Foundation is dedicated to providing outdoor education opportunities to those experiencing barriers such as financial, cultural, and geographical.

Stay in touch

Sign up to our fundraising newsletter or email us at supporters@field-studies-council.org

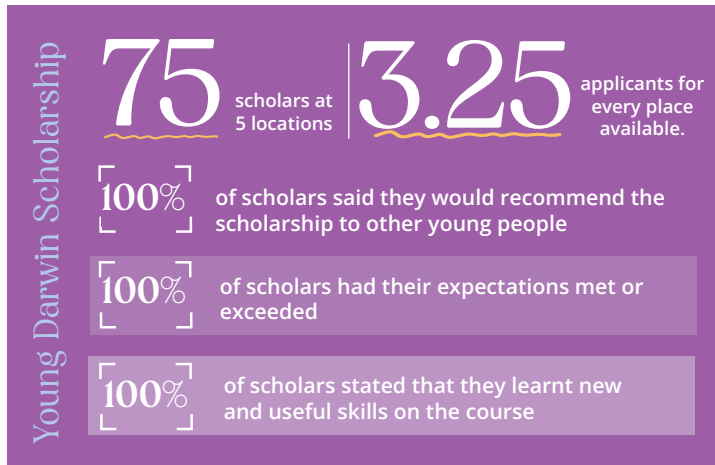


Scan Me

Young Darwin Scholarship

Our Young Darwin Scholarship initiative supports young people aged 16-25 to develop the skills and knowledge required to secure a green career and contribute to positive action for the environment.

This scheme has been running since 2012 and has so far supported over 400 young people.



"An incredible opportunity to spend time exploring your passion for the outdoors, and how you can translate that into a career in environmental science. Such an incredible group of likeminded individuals, you'll leave with long-lasting professional relationships and friendships."

"I never anticipated a programme to be so diverse in its representation of green careers and choices."

"The scholarship has enabled me to realise that natural history can evolve from a passion into a career, and that it is never too late to transform your interests into your lifestyle!"

"The most enjoyable educational experience I've ever had."



Youth panel

Our Youth Panel had their first in-person meet up at Flatford Mill Field Centre, where they took part in team building and goal-setting activities, tried their hand at mammal trapping and enjoyed spending time in nature together.

The Youth Panel took part in an in-depth consultation on the accessibility of Young Darwin Scholarship resulting

Members of the Youth Panel fundraised as a team as part of the 'Re-boot and Raise challenge', collectively walking 467.5 miles and raising £329.

in implemented updates to the program, including changing the application questions to ensure that those from marginalised backgrounds were not disadvantaged due to lack of experience or access.

The group have also provided in-depth feedback on useful celebrity/influencer endorsements to seek for the charity, informing decisions on how Field Studies Council can connect with diverse audiences.





Generation Green 2

Field Studies Council was one of a number of key organisations helping to deliver the Generation Green 2 project, which by April 2025 had enabled more than 41,500 day and overnight nature connection experiences to young people who would otherwise miss out on opportunities to spend time outdoors in beautiful landscapes.

The Field Studies Council contributed to the four key aims of the programme:

1. Increase and enhance opportunities for young people to engage with nature.

- Delivered 108 funded school trips across England, reaching

3,938 young people aged 7–18.

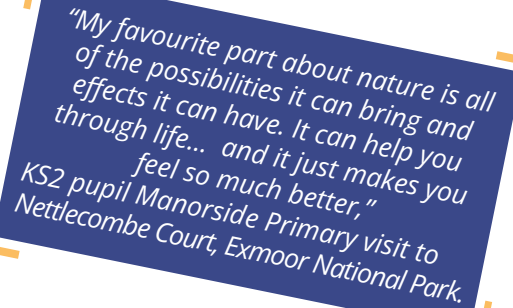
- Trips included 3,122 residential stays and 816 day visits, with curriculum-linked learning from KS2 to A Level.

2. Widen access to and engagement with protected landscapes.

- Residential took place at 8 centres across England, providing access to protected landscapes including Exmoor, the Lake District, and the Surrey Hills.
- For many participants, this was their first time experiencing protected landscapes.

3. Boost nature connectedness.

- Activities such as pond-dipping, star gazing,



"My favourite part about nature is all of the possibilities it can bring and effects it can have. It can help you through life... and it just makes you feel so much better,"
KS2 pupil Manorside Primary visit to Nettlecombe Court, Exmoor National Park.

environmental art and guided meditation helped deepen young people's emotional connection to nature.

- Young people described nature as calming, inspiring, and important for their wellbeing.
- 4. Enable young people to gain wellbeing benefits from the natural environment.**
- Teachers observed improved teamwork, confidence and behaviour outdoors.
 - Students reported feeling calmer and proud of their achievements – from hiking up hills to simply playing freely in natural spaces.





Leisure: Inspiring connections with nature

In 2025, our leisure programme continued to thrive, helping people reconnect with the natural world in creative and meaningful ways. 476 people immersed themselves in art and creative courses, 193 discovered the joy of nature holidays, and 82 shared unforgettable outdoor adventures together as families. Our centres provide more than just a place to stay - they

offer a gateway to discovery. From arts and crafts to guided walks, every experience is designed to spark curiosity and deepen appreciation for the environment. Since the pandemic, we've embraced the growing demand for wildlife-themed family breaks and group bookings, creating spaces where people can learn, play, and explore together. In addition, we've

seen a rise in faith groups choosing our centres for sole occupancy retreats, reflecting our commitment to inclusivity and flexibility.



And relax...

And because great experiences deserve great food, we've developed creative menus that cater to all faiths and dietary needs, ensuring every guest feels welcome and cared for.

"I attended a family weekend. Everything from the activities to the food was excellent and amazing value for money. We made dens, set humane mammal traps, made natural art, had a campfire, went for a night-time walk, learned how to read maps and went river-dipping. I'd book another weekend break like this in a heartbeat!"
Leisure guest

With **over 100 courses** offered each year, our leisure programme continues to grow - bringing together art, nature, and family experiences in truly unique locations. Every visit is an opportunity to relax, recharge, and reconnect with the natural world.



Biodiversity training

Biodiversity Training Programme Impact 2024

Summary

In 2024, the Biodiversity Training Programme delivered 245 courses nationwide, reaching 6,993 individuals—a 16% increase from 2023. Courses addressed professional development, compliance, and personal interest, with over 50% of attendees citing career-related motivations. Many participants were inspired to take action for nature, with 86% sharing knowledge, 57% submitting biological records, 58% volunteering, and 43% joining local groups. The programme's reputation

continues to grow through partnerships with UKHab Ltd, Amphibian and Reptile Conservation (ARC), Forestry Commission, Woodland Trust, Botanical Society of Britain and Ireland (BSBI), and Harper Adams University. New Biodiversity Metric-themed courses attracted 1,253 professionals from local authorities and developers—an emerging audience for the programme. Youth engagement rose significantly, with 14% of participants aged 18–24. Funding enabled 590 subsidies, and 32.2% of recipients stated they couldn't have attended

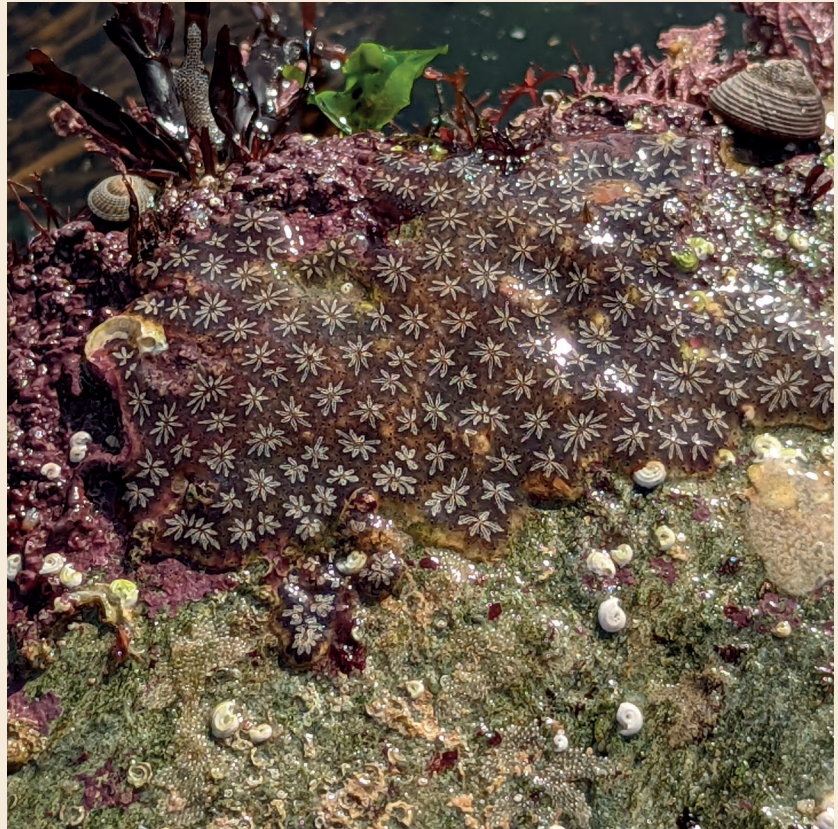


without financial support. 26% of attendees reported additional learning needs. A grant from The Foyle Foundation enhanced online botanical courses for neurodiverse learners, resulting in a best practice handbook and more accessible content. The Swire Charitable Trust supported the Young Darwin Scholarship, achieving 28% representation from marginalised groups and funding 11 new biodiversity tutors under 30. These initiatives are cultivating a new, diverse generation of environmental leaders.



A grant from **The Foyle Foundation** enhanced online botanical courses for neurodiverse learners, resulting in a best practice handbook and more accessible content. **26% of attendees** reported additional learning needs.

The **Swire Charitable Trust** supported the Young Darwin Scholarship, achieving **28% representation** from marginalised groups and funding 11 new biodiversity tutors under 30. These initiatives are cultivating a new, diverse generation of environmental leaders.



Influencing and advocacy

Through our UK-wide advocacy work, we campaign to ensure that everyone can experience great outdoor learning and fieldwork, not just those who can afford it.

We work —often in partnership with like-minded organisations —to show how outdoor learning improves so many pressing policy issues: engagement with learning and school, attainment, health and wellbeing, improved confidence and social skills.

We have heard the clear call from young people themselves to experience more opportunities to learn outdoors and develop the practical green skills for nature

that the UK needs. So we are working to ensure that these skills and first-hand experiences are guaranteed in the school curriculum for every child and young person.



Recently we have focussed on:

- Building relationships and understanding with the new and long serving 37 MPs, MSPs and MSs with our centres in their constituencies.
- Responding to the review of England's curriculum and assessment, aiming to embed more outdoor learning and fieldwork into every child's experience
- Engaging with a number of emerging government policies and inquiries into youth, the love of learning, access to green space and land use.



Her Royal Highness The Princess Royal learns about fundraising efforts for the Field Studies Council from Gemma Edmonds, Fundraising Manager

Sustainability

Education is our most powerful tool to encourage positive behaviour change. When visitors and guests visit a Field Studies Council location, it's our responsibility to share our message with them. That's why we include sustainability links in all our fieldwork.

"The Green Fund project has significantly boosted biodiversity at Juniper Hall. The creation of a purpose-built pond has led to an increase in invertebrate populations. The pond is a thriving micro-ecosystem, supports a diverse range of species and plays a crucial role in local nature recovery."



Our commitment to food sustainability

- Welfare Standards
- Sustainable choices
- Food waste
- Biodiesel
- Carbon conscious
- Green eating
- Limit daily/multiple deliveries
- Eco-friendly cleaning products
- Gas equipment to electric
- Engagement

Our people: making a difference **together**

Our people are at the heart of everything we do. Whether delivering training, supporting learners, or creating new opportunities, we are proud of the commitment, passion, and expertise across our team.

Over the past year, we have:

- Supported an apprentice to build their career through practical, hands-on experience.
- Welcomed 7 trainee tutors, strengthening the next generation of educators.
- Expanded our network with 25 associate tutors, bringing in fresh perspectives and specialist expertise.

We continue to invest in creating a positive, inclusive workplace, demonstrated by our commitment to:

- Investors in People: Standard level
- Armed Forces Covenant: Proud supporters of veterans, reservists, and military families.
- Disability Confident: We are proud to be recognised as a Disability Confident Committed employer, actively working to build an inclusive and accessible workplace for all.



Kelsie joined us as a Trainee Tutor based at Slapton Ley. With a genuine interest in the outdoors, but lacking official training, Kelsie was accepted onto our Young Darwin Scholarship, to help her develop the skills and knowledge needed for her traineeship. After a successful year as a trainee, Kelsie has accepted a full time position as a tutor at Epping Forest. Kelsie says: "Having the Young Darwin Scholarship network around has helped me to feel supported going into my job as a trainee tutor, and now as a full time tutor"

INVESTORS IN PEOPLE®
We invest in people Standard

Publications, guides and gifts

Our customers base reaches across age, location, and knowledge, but almost all look for and name more plants and wildlife because of our guides.

Publications remain at the forefront of beginner and advanced taxonomic skills; skills which are desperately needed for public and professional awareness to tackle biodiversity loss, improve their garden for wildlife, submit biological records, or photograph or draw nature.

Identification resources to help people understand and care for the environment.

Wild ID publications:
134,000+ guides sold
11 new guides for sale
£540k+ income



Publications highlights



Guides for partners in Cyprus, Monserrat, Gibraltar and Antartica



Trees for Climate Action engaged with 7,756 people in Bradford and Glasgow, following trails and identifying trees in their local area



Linking **biodiversity training** with new guides to support Woodland Condition Assessment for Biodiversity Net Gain for Forestry Commission staff, surveyors and woodland owners.

Protecting the natural world with a gift

The impact of gifts in wills.

We are at the forefront of giving people an understanding of the natural world, so they are better equipped to protect it.

Over many years, generous members and supporters have enabled the development of our work through gifts in their wills. These legacies have enabled us to bring a greater understanding of the natural world to many thousands of people across the UK.

Please will you join them, so that together we can inspire and teach new generations about nature?



“We have written legacies into our wills to support the remarkable work the Field Studies Council does.”

Supporters Cathy and Fraser from Hampshire

Join us today with a membership

Together we can inspire more people to appreciate and care for the world around them and therefore protect its diversity and beauty for future generations.

From as little as £2 a month you can help disadvantaged children and young people who are unable to access education courses and related study guides.

www.field-studies-council.org/membership





Field Studies Council

Explore Discover Learn

Field Studies Council
Preston Montford
Montford Bridge
Shrewsbury SY4 1HW

Telephone: 01743 852100

Email: enquiries@field-studies-council.org

www.field-studies-council.org

Field Studies Council is a registered charity in England and Wales no 313364 and in Scotland no SC039870 and a limited company registered in England and Wales no 412621. Registered Office: Preston Montford, Shrewsbury, Shropshire, SY4 1HW

Our Impact: updated September 2025

Our Centres

Residential centre ●
Day centre ●

